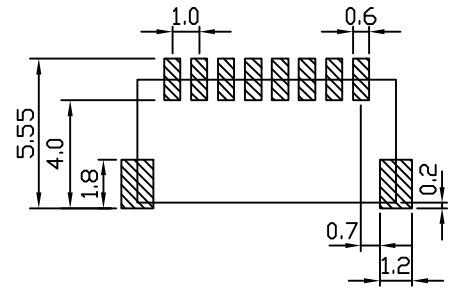
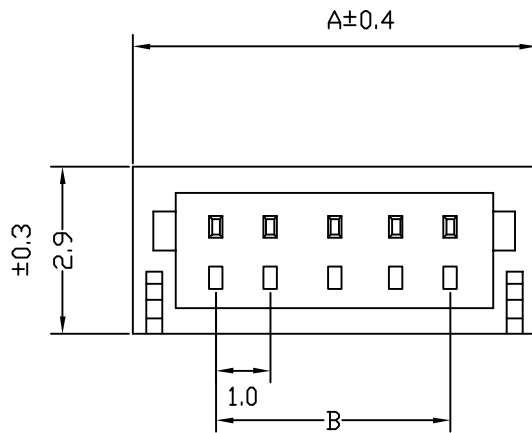
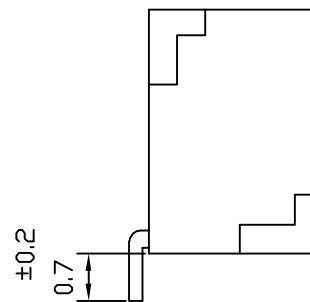
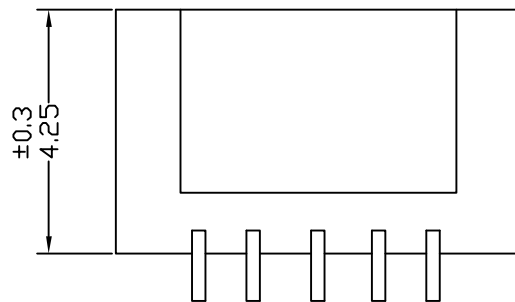


EVER-CONN
E.C.I. *E001PR SERIES*




P.C.B LAYOUT



PART NO.	A	B
E001PR-02	4.0	1.0
E001PR-03	5.0	2.0
E001PR-04	6.0	3.0
E001PR-05	7.0	4.0
E001PR-06	8.0	5.0
E001PR-07	9.0	6.0
E001PR-08	10.0	7.0
E001PR-09	11.0	8.0
E001PR-10	12.0	9.0
E001PR-11	13.0	10.0
E001PR-12	14.0	11.0
E001PR-13	15.0	12.0
E001PR-14	16.0	13.0
E001PR-15	17.0	14.0

- * MAT'L: NYLON 66 UL94V-0
- * CURRENT RATING: 1A AC DC
- * VOLTAGE RATING: 50V AC DC
- * MATES WITH: E001T SERIES TERMINAL
- * ACCEPTS WITH: E001H SERIES HOUSING

REMARKS
REV 1

TOLERANCES UNLESS OTHERWISE SPECIFIED		±0.4	±0.5	MARK	REVISED	Y. M. D.	REVISER	SCALE	/	mm
	PARTITION	20-40	40 UP	ISSUER	LAY	CHECK		ANGLE		3TH ANGLE
	TYPE	±0.2	±0.3	 旗欣股份有限公司 EVER CONNECTOR INDUSTRIAL CO., LTD				DATE		DWG NO.
	PARTITION	1-10	10-20					91.9.4		E001PR